

21 Calga Street, Roseville Chase, 90 Babbage Road, Roseville Chase & 4 Binalong Street, West Pymble

CURRENT STATUS:

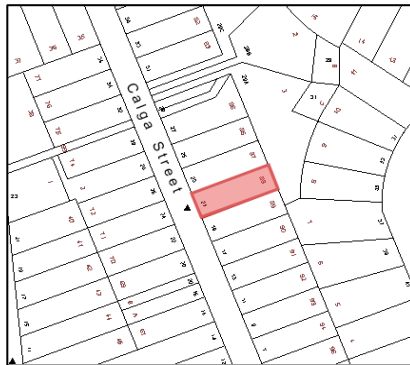
Calga was not recommended for reclassification following Public Hearing. Babbage and Binalong have been gazetted. LEP made and incorporated into KPSO.

DETAILS:

Planning Proposal to Rezone and reclassify three Council owned sites from community land to operational land.

View Current Planning Proposal [HERE](#)

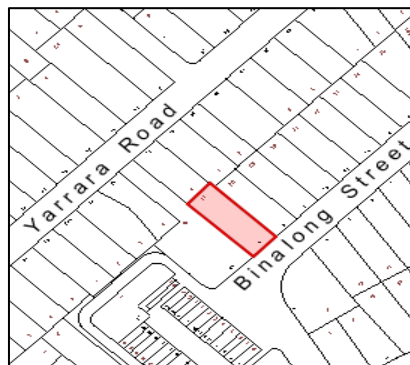
MAP:



21 Calga Street, Roseville Chase



90 Babbage Road, Roseville Chase



4 Binalong Street, West Pymble

STATUS:

Description	Date
Report to Council and Council Resolution	21/02/2012
Submitted to Department for Gateway Determination	18/05/2012
Gateway Determination Issued	12/06/2012
Public Exhibition	14/09/2012 – 12/10/2012
Report to Council and Council Resolution	16/07/2013
Calga not put up for Reclassification following a Public Hearing	14/02/2014
Babbage and Binalong Gazettal	14/02/2014
This Planning Proposal was Finalised on 14/02/2014.	