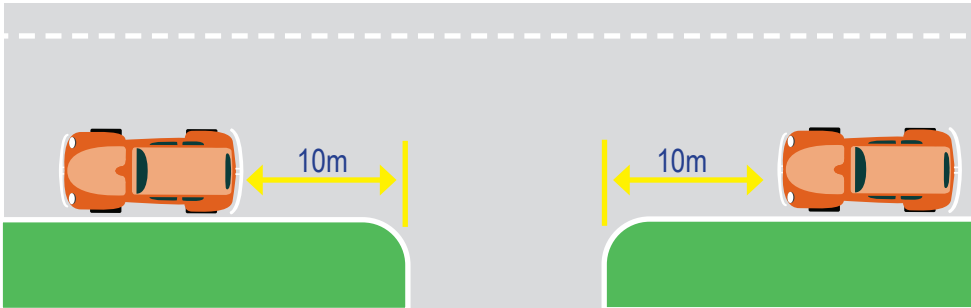


Parking Rules

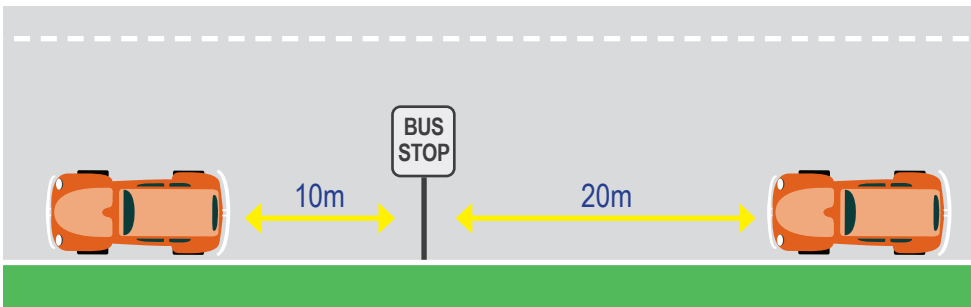
Please park safely and legally on the streets around your school. Park legally so you do not incur parking fines and demerit points. Council's Traffic Compliance Officers enforce parking around schools. If you park contrary to the road rules you will be fined!

You cannot stop or park your vehicle:



Within 10m of an intersecting road at an intersection without traffic lights (20m with traffic lights), unless a sign states you can park there (see image at left).

PENALTIES FROM: \$544*
Demerit Points apply

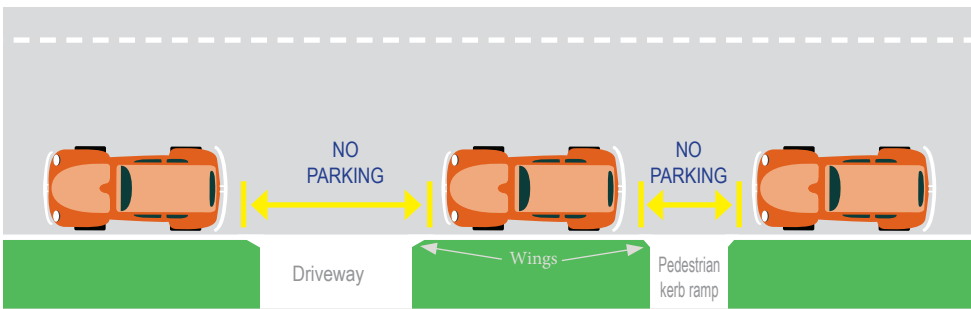


Within 20m before and 10m after a bus stop (see image)

PENALTIES FROM: \$410*
Demerit Points apply

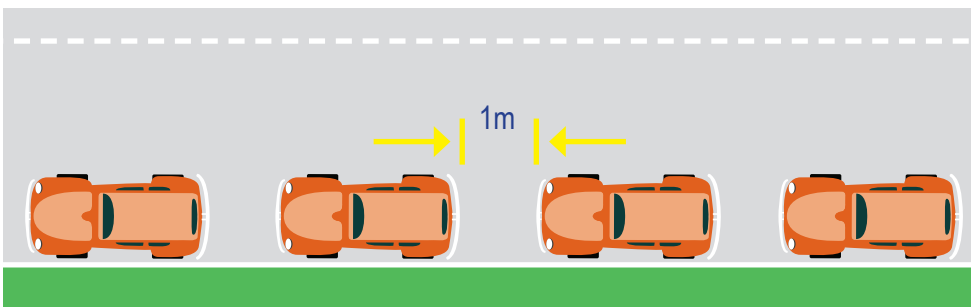
Parallel parking

This is the usual way to park unless signs tell you otherwise. You must park in the same direction of travel and parallel and as close to the kerb as possible.



You can NOT park across driveways or pedestrian kerb ramps. A vehicle can be parked up to the wings on the driveways or ramp (see image)

PENALTIES FROM: \$410*
Demerit Points apply



You should park at least one metre from any other parked vehicle and entirely within any marked parking lines where provided (see image)

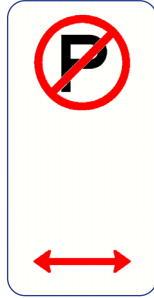
PENALTIES FROM: \$136

* Penalty amounts are for offences committed in School Zones

Parking Rules

No Parking Zone

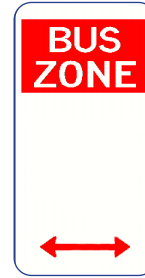
- Drivers may stop in this zone to drop off or pick up passengers or goods for a maximum of 2 minutes.
- The driver **MUST** remain in or within 3 metres of the vehicle at all times.
- The vehicle must not be left unattended.
- If times of operation are shown on the sign, the restriction only applies during the times shown.
- No Parking zones can also be used to drop off and pick up children.



Penalty: \$227 in School Zone + 2 Demerit Points

Bus Zones

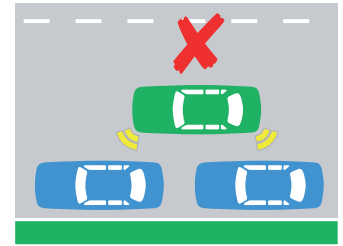
- Drivers are not permitted to stop within a bus zone at any time.
- If times of operation are shown on the sign, the restriction only applies during the times shown.



Penalty: \$410 in School Zone + 2 Demerit Points

Double Parking

- Drivers are not permitted to stop or park between the centre of the road and another vehicle that is parked at the side of the road.
- Double parking decreases visibility for motorists and pedestrians, and significantly reduces road safety around schools.



Penalty: \$410 in School Zone + 2 Demerit Points

No Stopping Zone

- Stopping is not permitted at any time.
- If times of operation are shown on the sign, the restriction only applies during the times shown.



Penalty: \$410 in School Zone + 2 Demerit Points

LEGAL DISCLAIMER:

This document is produced as a guide only. Council takes no responsibility for any damage sustained to vehicles when parked in local streets. It is the responsibility of the driver to be aware of traffic regulations and parking restrictions when parking a vehicle and Council reserves its right to issue Penalty Infringements Notices in circumstances where traffic regulations or parking restrictions have been violated.

Safe Walking Tips

- Always use pedestrian crossings.
- Never assume that a driver can see you or will stop for you. Their vision may be affected by the sun, poor light, parked cars or other distractions.
- Remember that drivers take longer than usual to stop in the rain or on a wet road.
- At intersections, check for turning vehicles before you leave the footpath and while you are crossing the road.
- Children up to ten years old should hold an adult's hand in the car park, on the footpath and when crossing the road.
- Avoid using a mobile phone, head phones or other device while you are crossing the road.
- Watch out for bicycles.